



**NATIONAL OPEN CAPTION
TRAINING PROGRAM**

About The Caption Board



Measurements

Length: 52.3 inches

Height: 10 inches

Depth: 5.6 inches

Weight: 26 lbs

Requirements

120 volt dedicated line, non-dim circuit, and not shared with any other devices.

Board connects to the captioner's laptop via a DB-9 or XLR cable which the captioner brings.

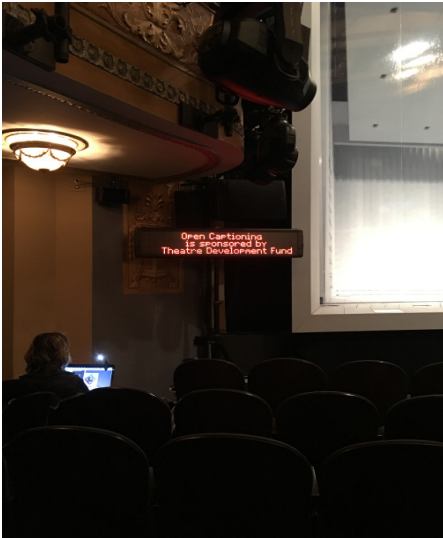
Flexibility

The board has slideable hooks for it to be hung or comes with a tripod that at it's widest is 3 ft. wide.

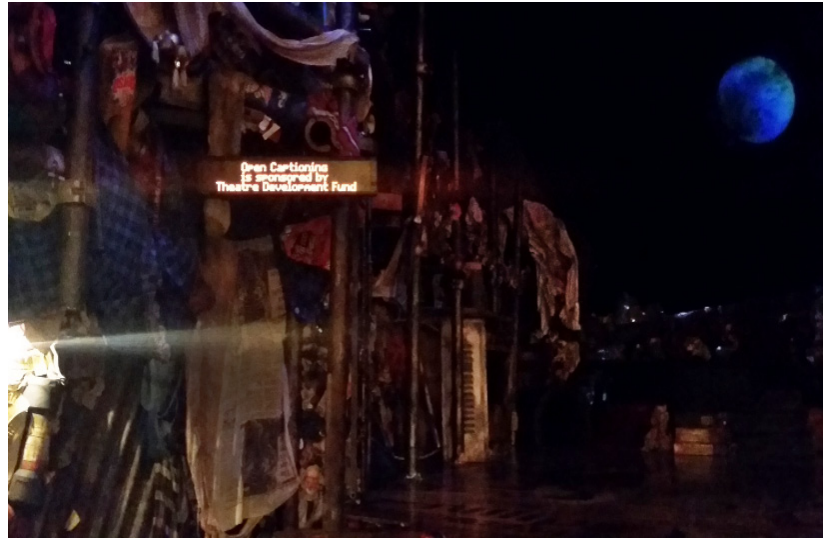
Placement

Ideal placement of the caption board allows patrons who use the service to see the board and the stage without have to look back and forth like a tennis match.

EXAMPLES OF BOARD PLACEMENT



Example of LED Board on Tripod



Example of LED Board being hung using the slidable hooks



Example of LED Board being mounted near the speaker stack using a custom clamp